



Beaufort County Public Works

Stormwater Infrastructure

Project Summary

Project Summary: Paige Point Bluff

Narrative Description of Project:

Project improved 711 L.F. of drainage system. Removed blockage from flowline. Cleaned out 571 L.F. of outfall ditch and 140 L.F. of roadside ditch. Jetted (2) crossline pipes and (1) access pipe. Installed rip rap and hydroseeded for erosion control.

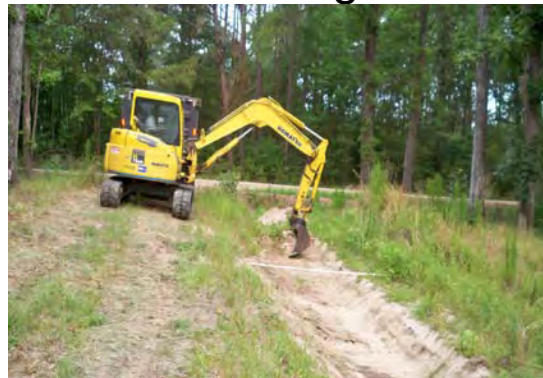
Completion: Jun-11

2011-632 / Paige Point Bluff	Labor Hours	Labor Cost	Equipment Cost	Material Cost	Contractor Cost	Indirect Cost	Total Cost
AUDIT / Audit Project	0.50	\$10.24	\$0.00	\$0.00	\$0.00	\$0.00	\$10.24
CLPJT / Crossline Pipe - Jetted	10.00	\$218.80	\$110.80	\$43.69	\$0.00	\$0.00	\$373.29
HAUL / Hauling	29.50	\$620.61	\$392.65	\$428.53	\$0.00	\$0.00	\$1,441.78
HYDR / Hydroseeding	32.00	\$701.76	\$108.52	\$155.23	\$0.00	\$0.00	\$965.51
ODCO / Outfall ditch - cleaned out	47.00	\$1,073.54	\$215.34	\$51.62	\$0.00	\$0.00	\$1,340.50
Indirect Labor Services and Supplies	0.00	\$0.00	\$0.00	\$0.00	\$0.00	\$1,790.64	\$1,790.64
2011-632 / Paige Point Bluff	119.00	\$2,624.95	\$827.31	\$679.07	\$0.00	\$1,790.64	\$5,921.96
Sub Total							
Grand Total	119.00	\$2,624.95	\$827.31	\$679.07	\$0.00	\$1,790.64	\$5,921.96

Before



During



After



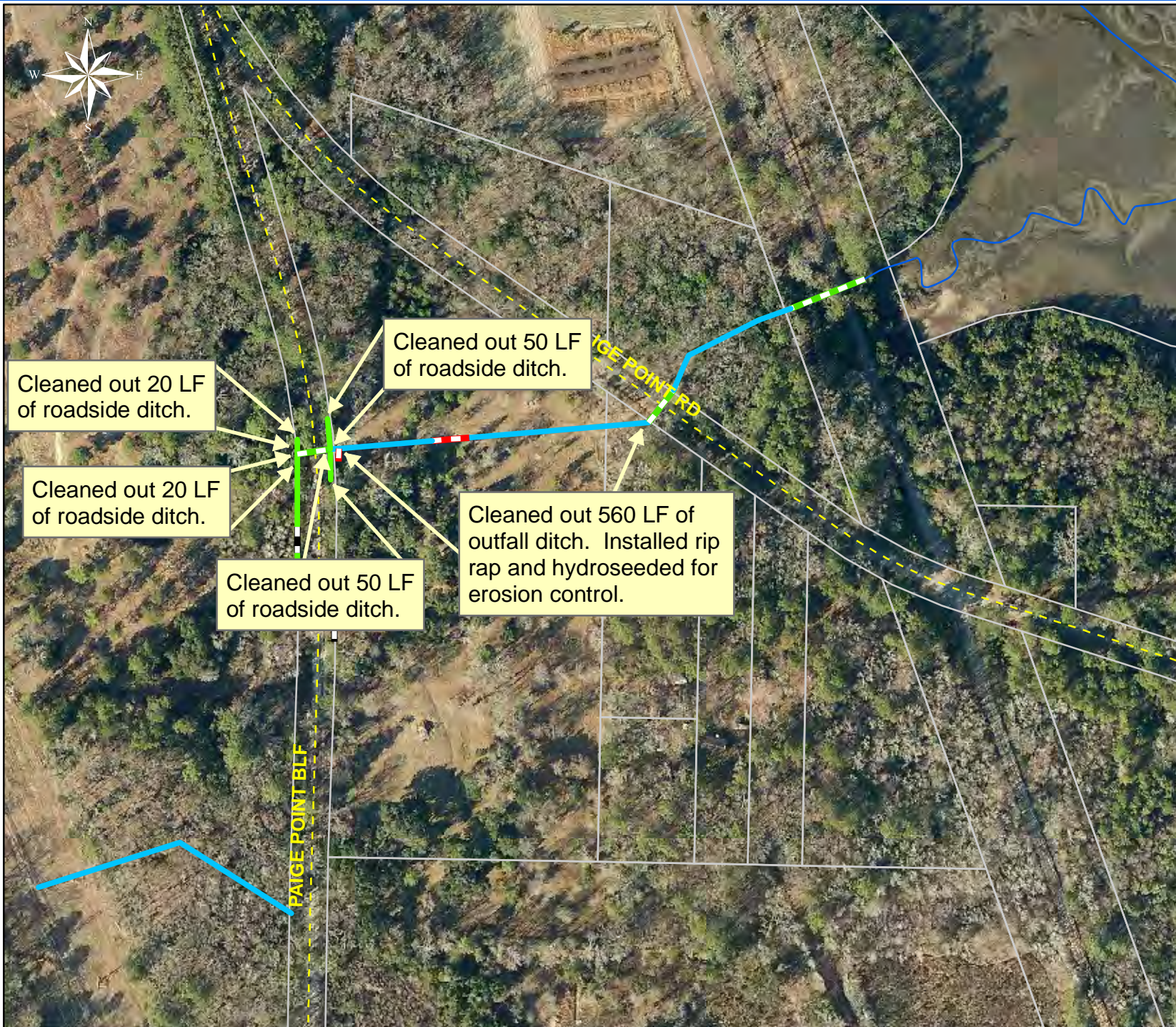
Project: Paige Point Bluff

Activity: Drainage Maintenance

Project #: 2011-632

Township: Sheldon

Completed: June 2011



Cleaned out 20 LF of roadside ditch.

Cleaned out 20 LF of roadside ditch.






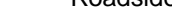








Cleaned out 50 LF of roadside ditch.

Cleaned out 50 LF of roadside ditch.

Cleaned out 560 LF of outfall ditch. Installed rip rap and hydroseeded for erosion control.

Legend

Drainage Type

-  River
-  Stream
-  Outfall
-  Lateral
-  Lateral Pipe
-  Roadside
-  Roadside Pipe
-  Road Pipe
-  Crossline
-  D/W
-  Access
-  Piped
-  Bleeder
-  Parcels



1 inch = 242 feet